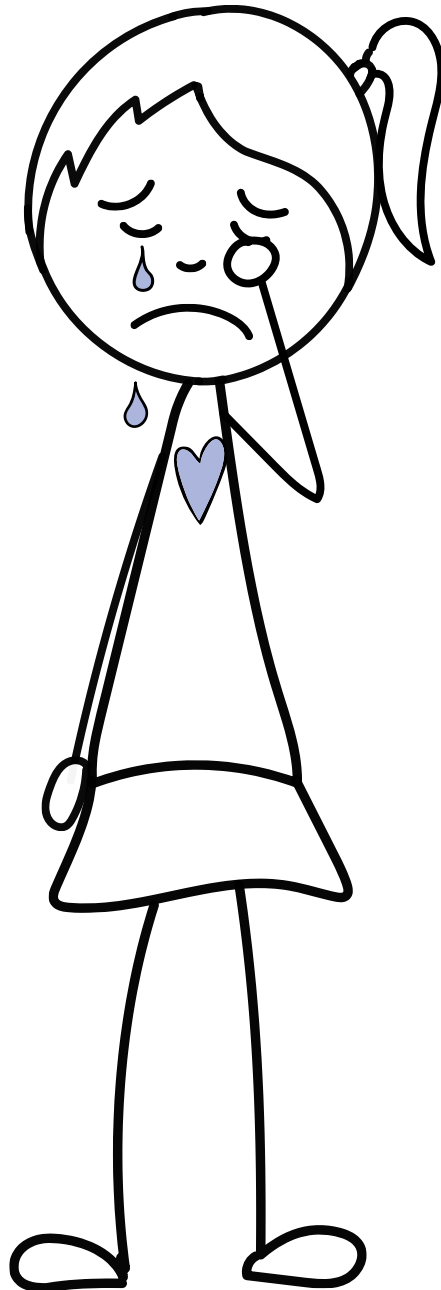
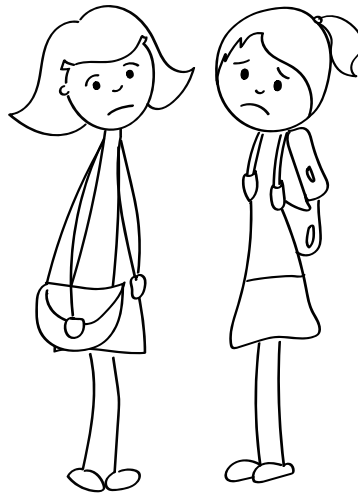
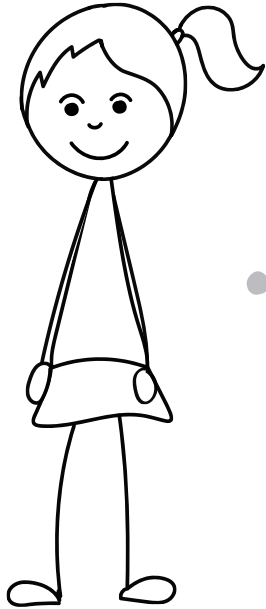


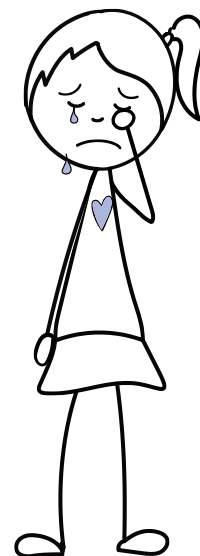
Tina ist traurig.
Woran erkennst du die Trauer?
Markiere die Stellen.



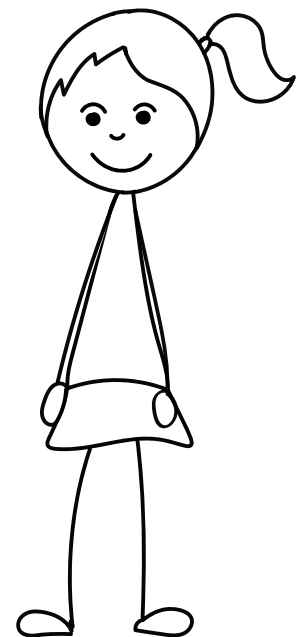
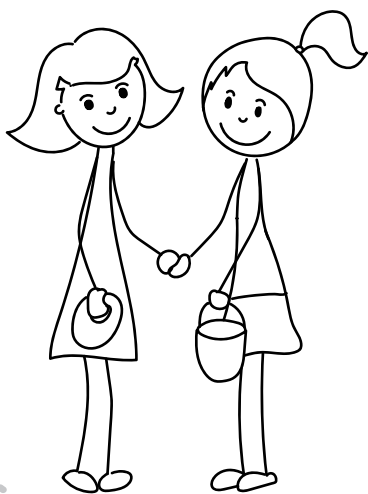
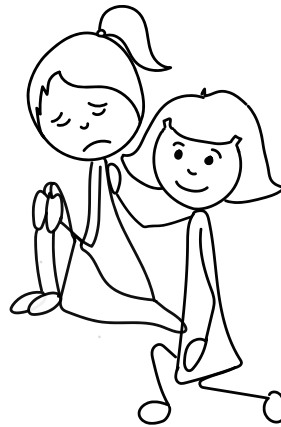
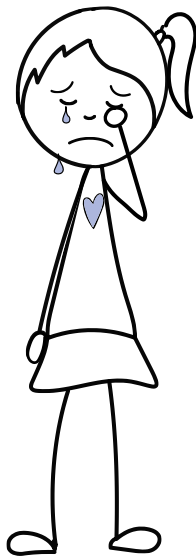
Das ist Tina. Zeichne die Linie nach. Was macht Tina traurig?



Trauer



Tina ist traurig. Zeichne die Linie nach.
Hilf Tina wieder fröhlich zu sein.



Schrift: Grundschrift von Christian Urff (CC-BY 3.0)
Url: <https://fontlibrary.org/de/font/grundschrift>, Stand 28.06.2024

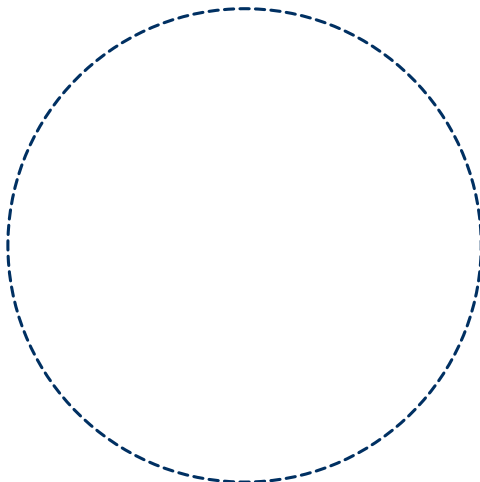
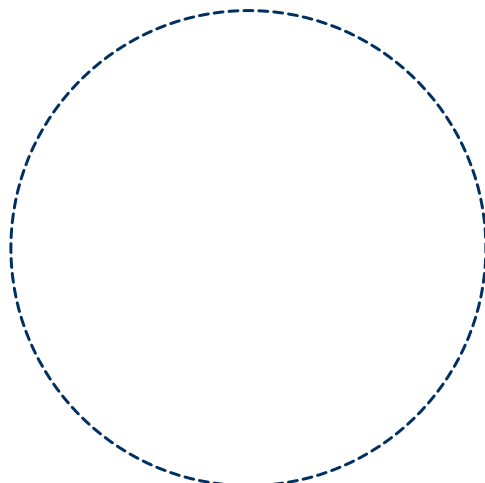
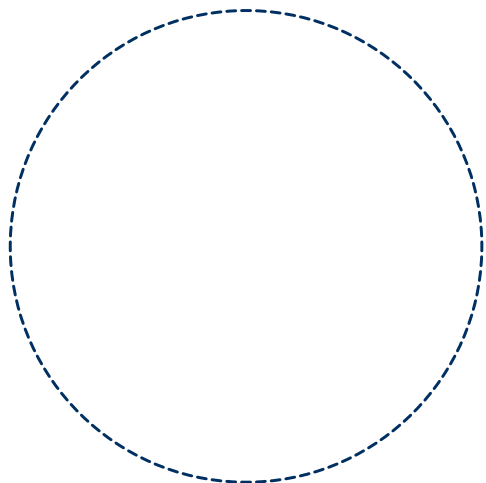
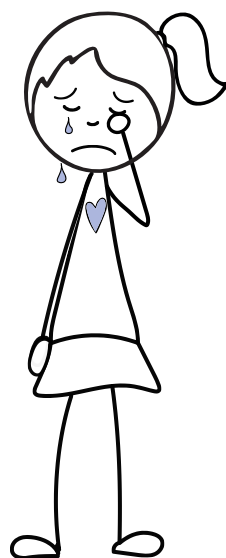
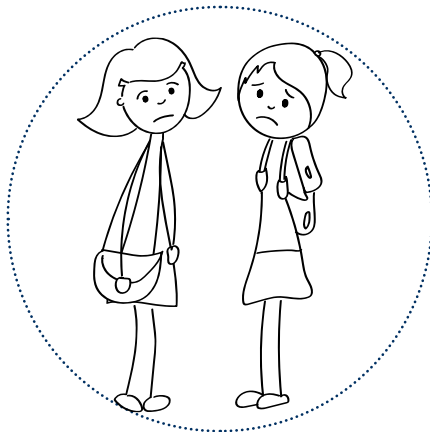


Herausgeber: Landesinstitut für
Schulqualität und Lehrerbildung
Sachsen-Anhalt

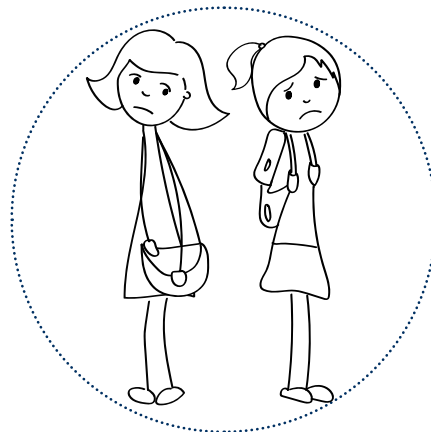
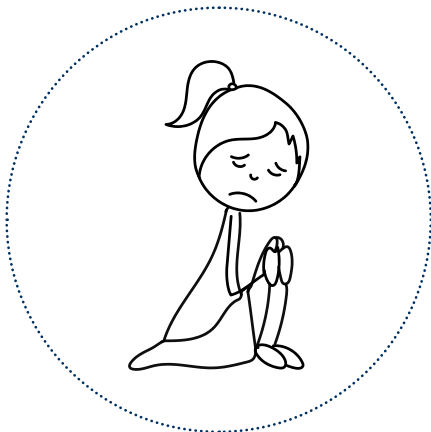
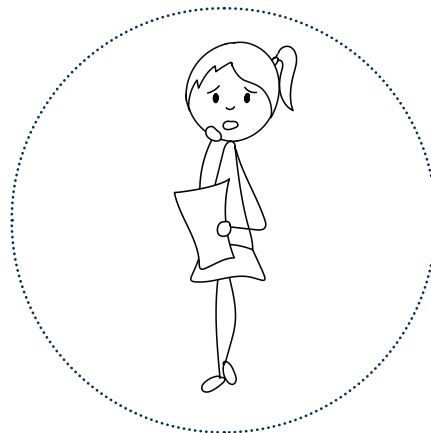
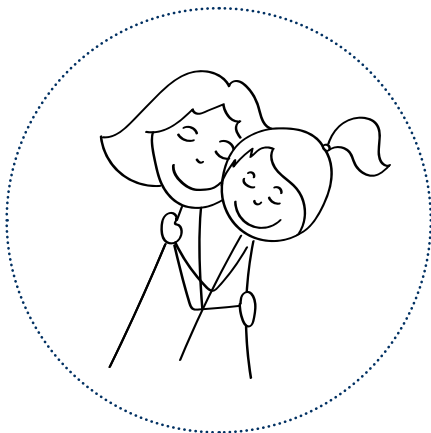
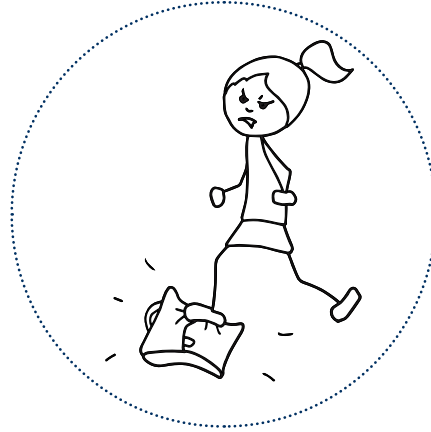
www.bildung-lsa.de/digitalassistentz

da digital
assistentz
SACHSEN ANHALT

Darüber ist Tina traurig.
Was macht dich traurig? Male in die Kreise.

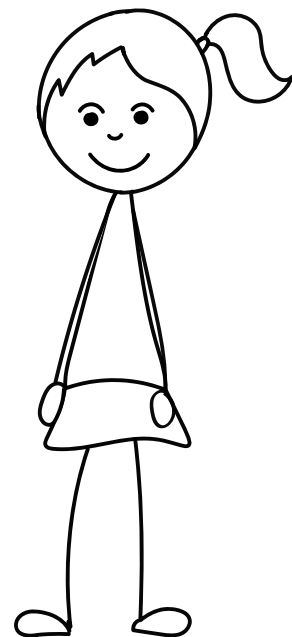
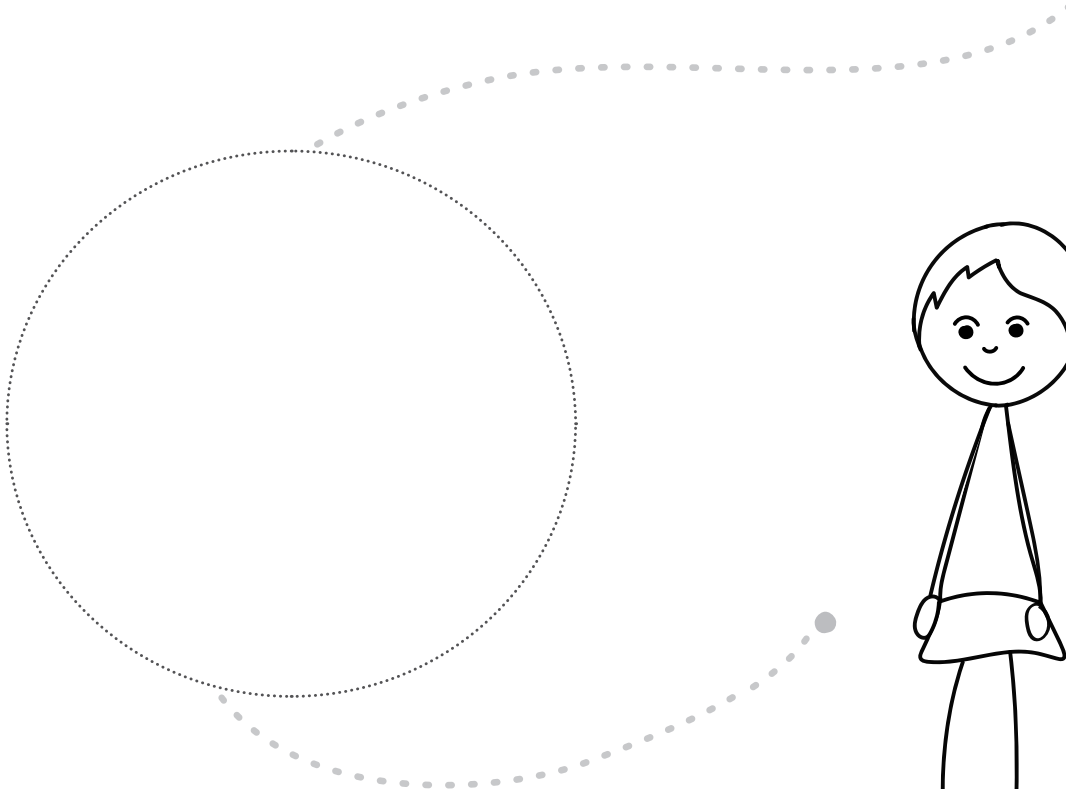
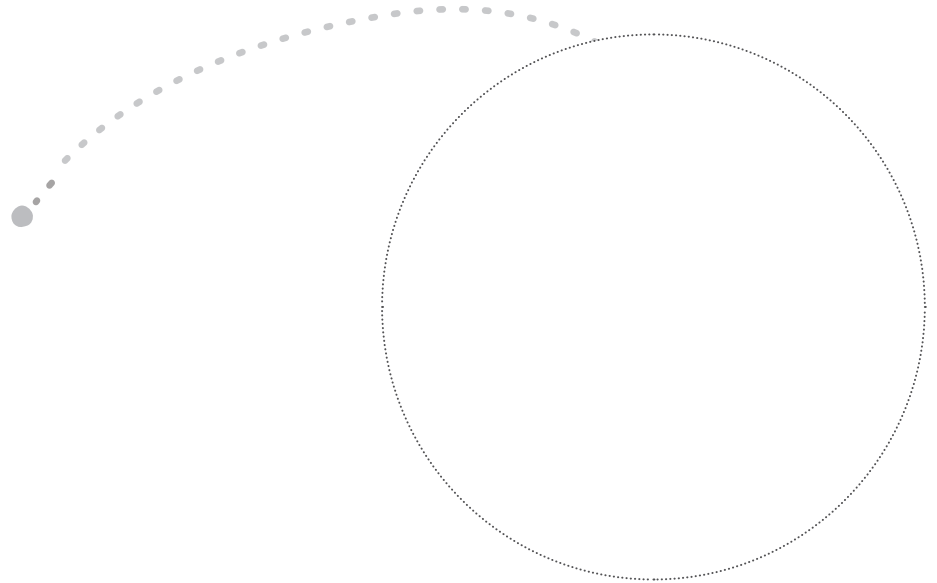
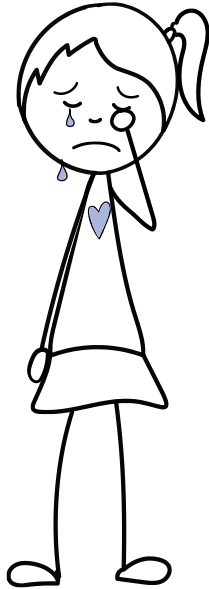


In welchen Bildern ist Tina traurig? Kreise ein.



Was hilft Tina Trauer?

Male in die Kreise.



Was vertreibt Tinas Trauer? Male es um Tina herum.

